

**Anping sunflower wire mesh making co.,ltd**

**ADD: No. 37 in filter industrial area,Anping,China.**

**Mob: +8613363348732 Email: [michael@sfwiremeesh.com](mailto:michael@sfwiremeesh.com)**

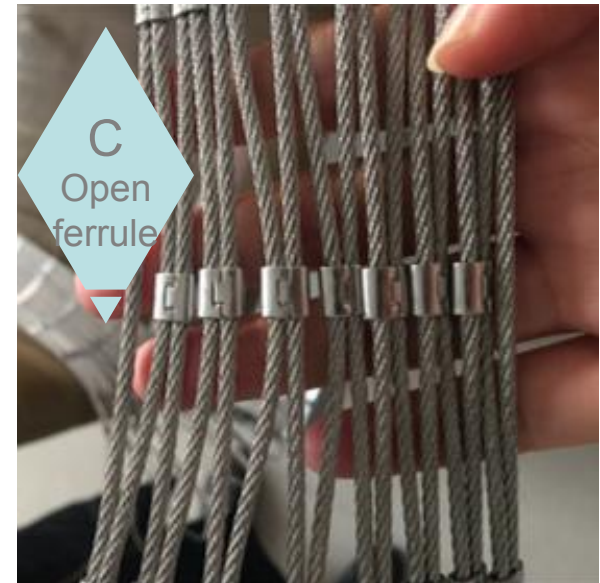
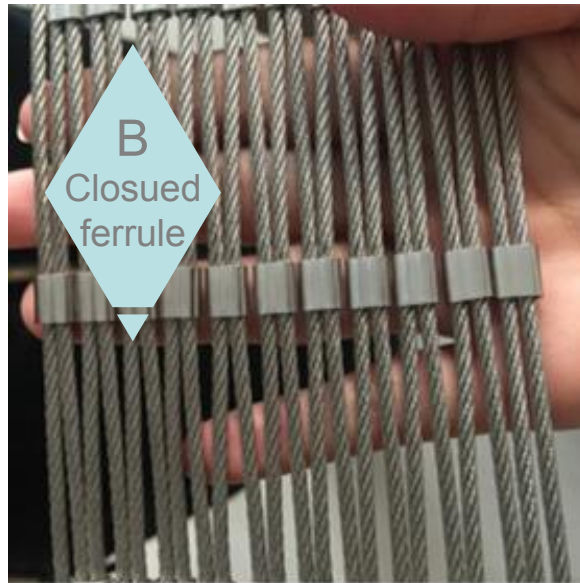


# Stainless steel cable mesh / wire rope mesh

**Stainless steel cable mesh have two types: hand woven mesh and ferrule mesh.**

Hand woven mesh is a kind of plain weave, each warp wire rope crosses alternately above and below each weft wire rope.

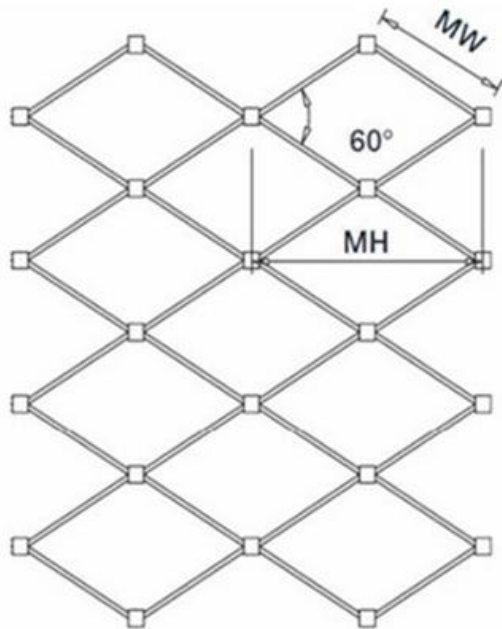
Ferrule mesh is combined by stainless wire rope and ferrules which are made of the same grade stainless steel, the ferrule divided into closed ferrule or open ferrule.



# Stainless steel cable mesh specifications:

Flexible stainless steel cable mesh is the future of the enclosure material, manufactured from high-grade stainless steel cables of AISI 304, 316, 316L, wire rope structure is 7\*7 or 7\*19, mesh can be applied in either a vertical or horizontal direction.

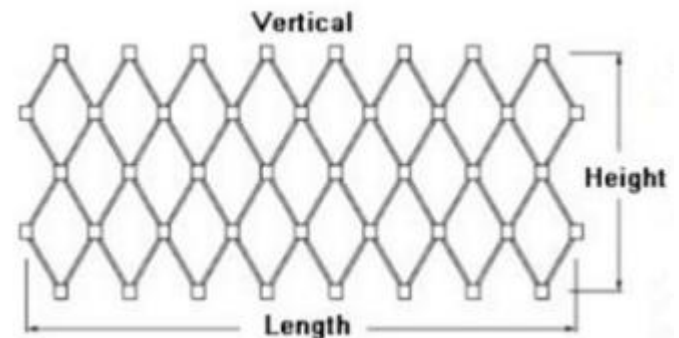
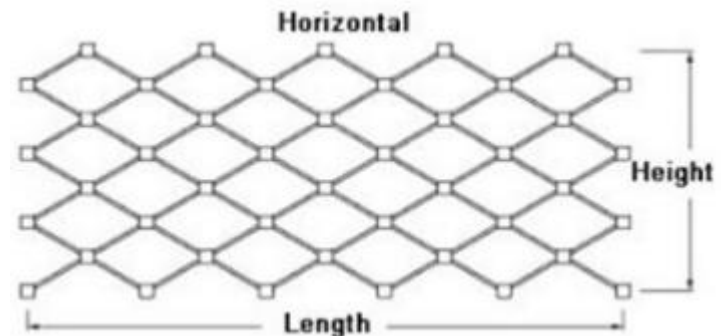
Commonly used mesh sizes range from 20 mm x 20 mm to 300 mm x 300 mm with stainless cable diameters from 1.0mm to 4.0 mm, Allowing architects and designers to choose from a variety of load the corresponding specifications.



Construction 7 x 7



Construction 7 x 19



Material:	AISI 304, 316, 316L
Wire diameter:	1-4 mm
Hole size:	20*20-300*300mm
Angle:	60-90 degrees
Hole shape:	Diamond or Square
Type:	Closed ferrule, open ferrule or hand woven
Color:	Silver or black oxide

Stainless steel cable mesh (Ferruled type)



Model	Wire structure	picture	Normal Break	Wire Diameter		Hole Size	
			lbs.	mm	inch	mm	inch
SF32120	7x19		1600	3.2	1/8	120x208	4.75x8.23
SF32100	7x19		1600	3.2	1/8	100x173	3.94x6.81
SF32090	7x19		1600	3.2	1/8	90x156	3.55x6.15
SF24100	7x7		920	2.4	3/32	100x173	3.94x6.81
SF24090	7x7		920	2.4	3/32	90x156	3.54x6.14
SF24080	7x7		920	2.4	3/32	80x139	3.15x5.47
SF24070	7x7		920	2.4	3/32	70x121	2.75x4.76
SF20100	7x7		676	2.0	5/64	100x173	3.94x6.81
SF20090	7x7		676	2.0	5/64	90x156	3.54x6.14
SF20080	7x7		676	2.0	5/64	80x139	3.15x5.47
SF20070	7x7		676	2.0	5/64	70x121	2.75x4.76
SF16080	7x7		480	1.6	1/16	80x139	3.15x5.47
SF16070	7x7		480	1.6	1/16	70x121	2.75x4.76
SF16060	7x7		480	1.6	1/16	60x104	2.4x4.16
SF16050	7x7		480	1.6	1/16	50x87	2x3.5
SF12080	7x7		270	1.2	3/64	80x139	3.15x5.47
SF12070	7x7		270	1.2	3/64	70x121	2.75x4.76
SF12060	7x7		270	1.2	3/64	60x104	2.4x4.16
SF12050	7x7		270	1.2	3/64	50x87	2x3.5

# Stainless steel woven mesh (hand woven)



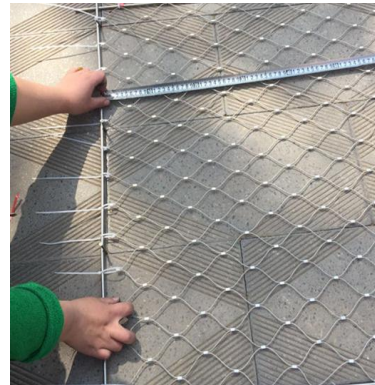
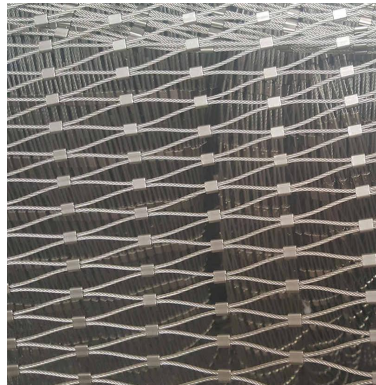
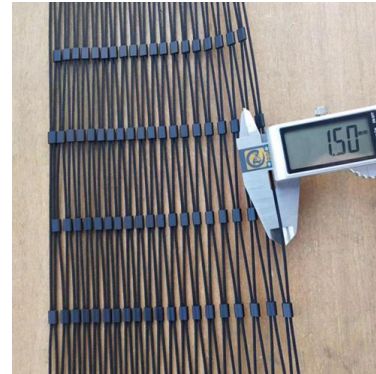
Model	Wire structure	Normal Break	Wire Diameter		Hole Size	
			mm	inch	mm	inch
SF32120	7x19	1600	3.2	1/8	120x120	4.75x4.75
SF32102	7x19	1600	3.2	1/8	102x102	4x4
SF32090	7x19	1600	3.2	1/8	90x90	3.55x3.55
SF32076	7x19	1600	3.2	1/8	76x76	3x3
SF32051	7x19	1600	3.2	1/8	51x51	2x2
SF24102	7x7	920	2.4	3/32	102x102	4x4
SF24090	7x7	920	2.4	3/32	90x90	3.55x3.55
SF24076	7x7	920	2.4	3/32	76x76	3x3
SF24060	7x7	920	2.4	3/32	60x60	2.4x2.4
SF24051	7x7	920	2.4	3/32	51x51	2x2
SF20076	7x7	676	2.0	5/64	76x76	3x3
SF20060	7x7	676	2.0	5/64	60x60	2.4x2.4
SF20051	7x7	676	2.0	5/64	51x51	2x2
SF20038	7x7	676	2.0	5/64	38x38	1.5x1.5
SF16076	7x7	480	1.6	1/16	76x76	3x3
SF16051	7x7	480	1.6	1/16	51x51	2x2
SF16038	7x7	480	1.6	1/16	38x38	1.5x1.5
SF16030	7x7	480	1.6	1/16	30x30	1.2x1.2
SF16025	7x7	480	1.6	1/16	25x25	1x1
SF12038	7x7	270	1.2	3/64	38x38	1.5x1.5
SF12030	7x7	270	1.2	3/64	30x30	1.2x1.2
SF12025	7x7	270	1.2	3/64	25x25	1x1
SF12020	7x7	270	1.2	3/64	20x20	0.8x0.8

# **Stainless steel cable mesh features:**

- 1.Stainless steel cable mesh are flexible and light weight, easy to install.
- 2.Stainless steel cable mesh can be produced by any size and shape, no matter how lager, how small.
- 3.It is made of high quality stainless steel wire, It is strong, corrosion-resistant, possessing extremely high load capacity.
- 4.Its service life can reach several tens of years, and the maintenance cost is very low.
- 5.Stainless steel cable mesh has diamond-shape openings, smooth surface and beautiful appearance, High Perspective, To provide protection without affecting the appreciation of the landscape.
- 6.It's green, no any pollution, easy to clean.



# Products show





# Our workshop





## **We are in Canton Fair**

**We attend the canton fair twice every year, we are the real factory since 2002 , we welcome you to visit.**